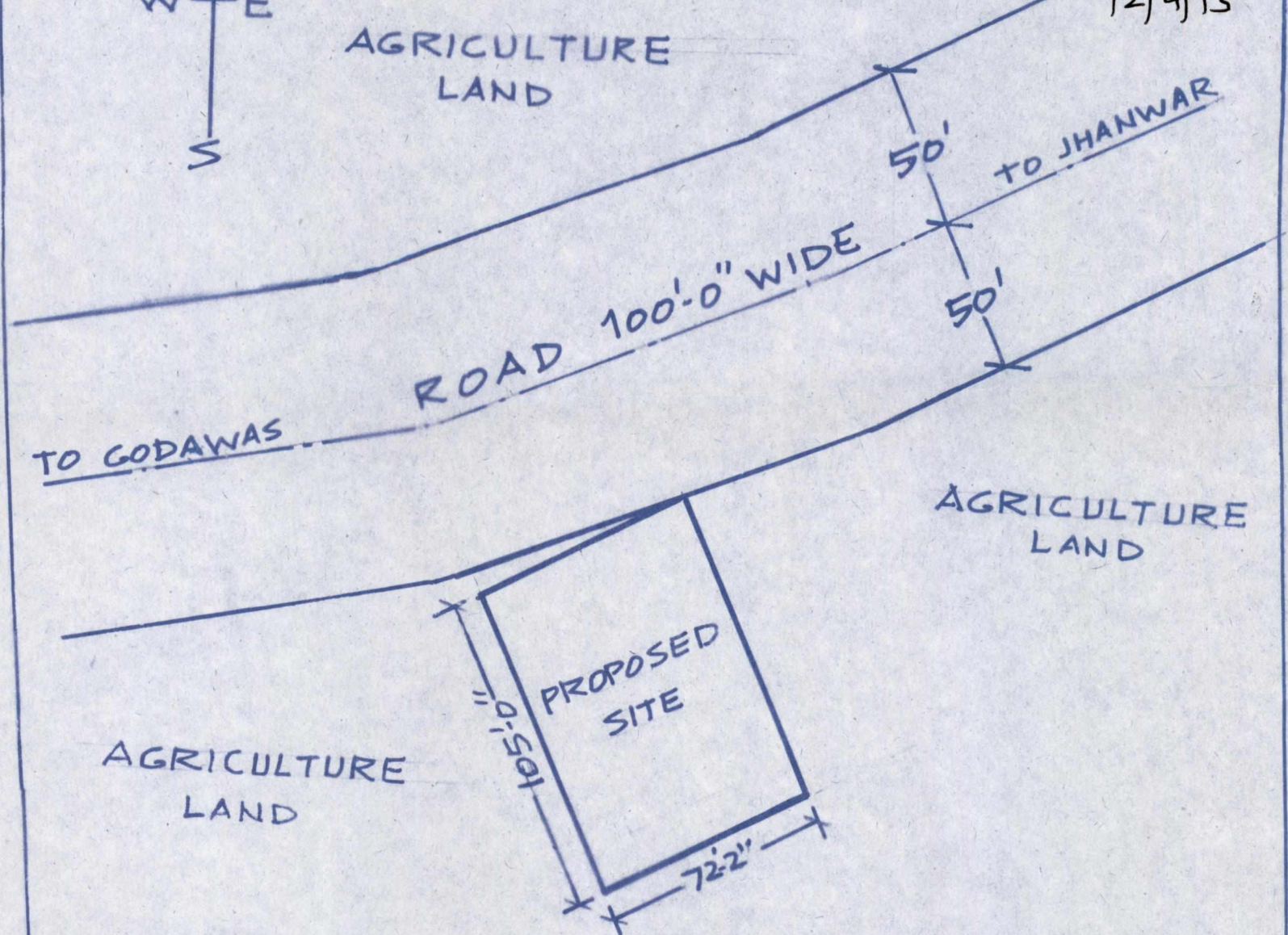
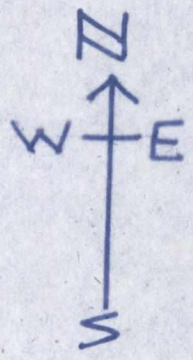


PROPOSED LAY OUT PLAN SHOWING FOR
L.P.G. GAS GODOWN SITUATED ON KHASRA
NO 1001/1 OF VILLAGE JHANWAR TEHSIL
LUNI DISTT. JODHPUR. SCALE:- 1" = 50 FT.

AREA:- 72'-2" x 105' = 842 SQYds.
OR = 704 SQMT. JDA (L) Drg. no.

162
 12/9/13



Layout Plan Approved as AGRICULTURE LAND

Per Decision Taken by ZLC

Dated :- 23/8/13

[Signature]

26/8/13
 जोधपुर नगर नियोजक
 जोधपुर विकास प्राधिकरण
 जोधपुर

12/9/13
 बसुन्दा (परिचय)
 जोधपुर विकास प्राधिकरण
 जोधपुर

[Signature]