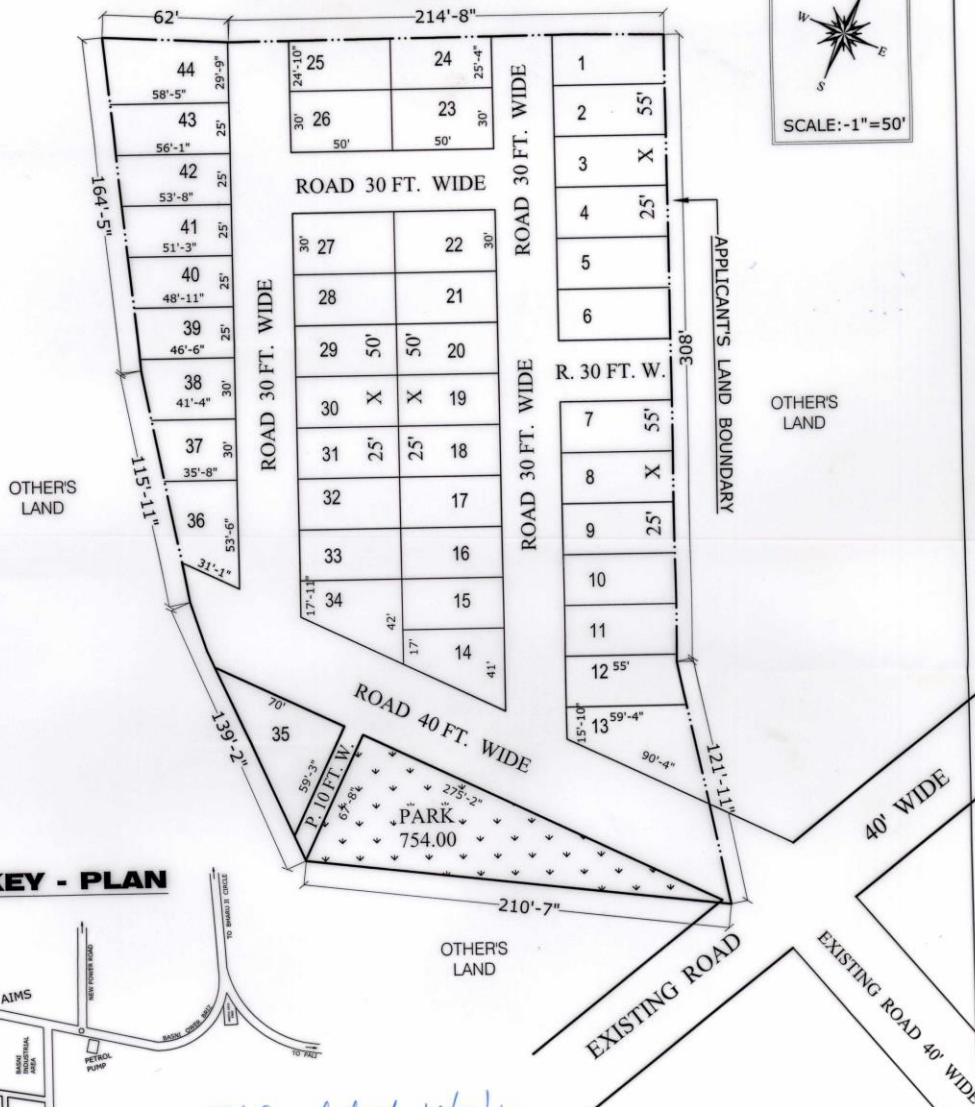


APPROVED LAY OUT PLAN ON KHASRA NO. 1007/740 OF VILLAGE JODHPUR AT JODHPUR

JDA (P) Drg No. 207  
20/11/14

KHASRA NO. 740/1006



**KEY - PLAN**



ZLC dated 16/01/14

*[Signature]*  
उप मगर नियोजक (वसिष्ठ)  
जोधपुर विकास प्राधिकरण जोधपुर विकास प्राधिकरण  
जोधपुर

LAND USE ANALYSIS		
AREA OF	Sq. yds	%
PLOTS AREA	6735.03	59.98
PARK AREA	754.00	06.71
ROAD AREA	3739.77	33.31
<b>TOTAL AREA</b>	<b>11228.80</b>	<b>100</b>

LAY OUT PLAN APPROVED WITH MODIFICATION IN Z.L.C. MEETING DATED 16.01.2014