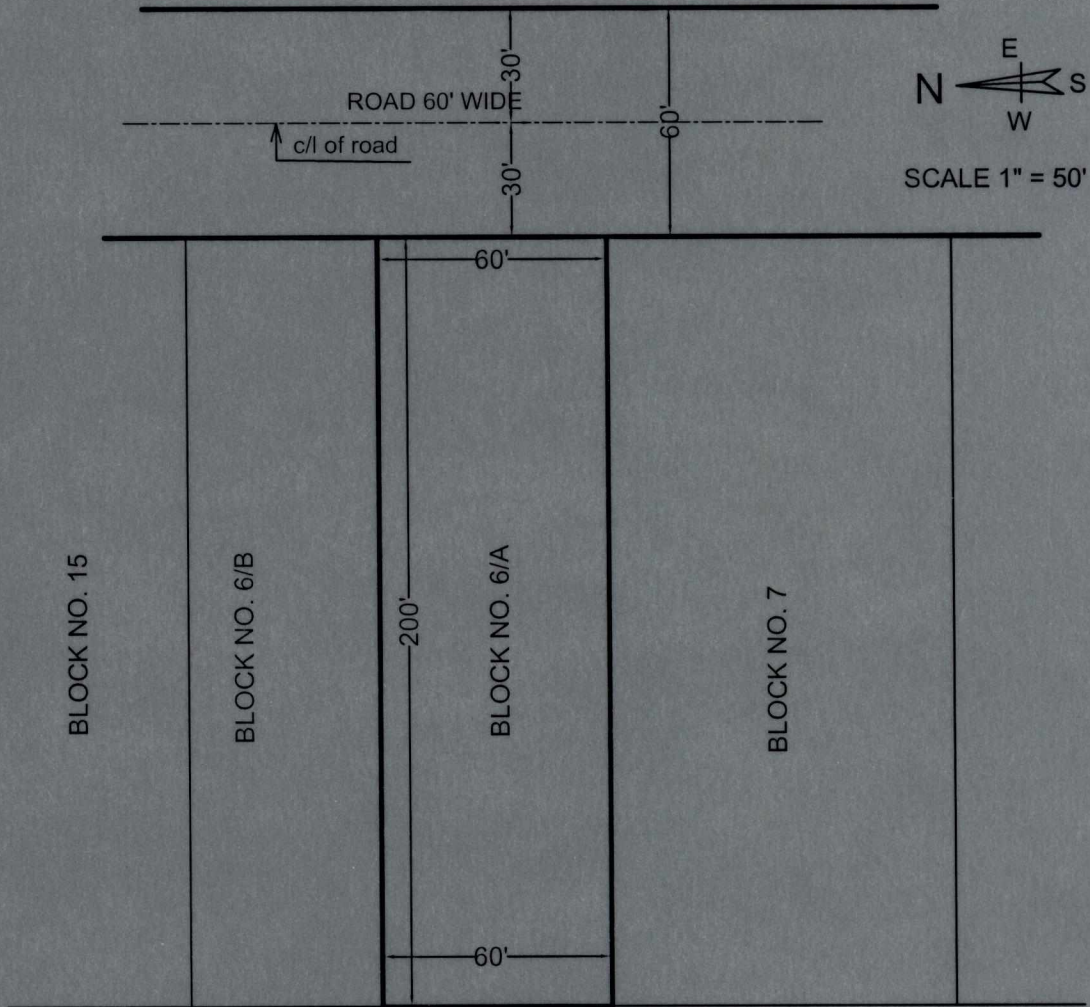


LAY-OUT PLAN SHOWING BLOCK NO. 6/A, ON KHASRA NO. 1090/740. (NEW 1566/1090) VLLAGE JODHPUR KHAS NEAR BASNI INDUSTRIAL AREA AT JODHPUR.

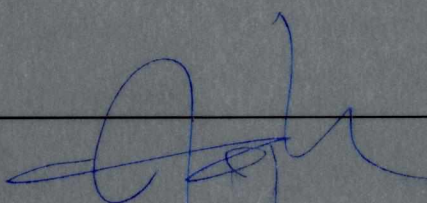
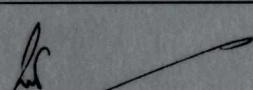
J.P.A. (B) DRG No. 304
30/12/13.

PLOT AREA = 12000.00 SQ. FTS. = 1333.33 SQ. YDS. = 1114.80 SQ. MTS.
 AREA IN ROAD = 00.00 SQ. FTS. = 000.00 SQ. YDS. = 00.00 SQ. MTS.
TOTAL = 12000.00 SQ. FTS. = 1333.33 SQ. YDS. = 1114.80 SQ. MTS.



ZLC dated 18/12/13

BLOCK NO. 5

 उप नगर नियोजक जोधपुर विकास प्राधिकरण जोधपुर		 उपायुक्त (दक्षिण) जोधपुर विकास प्राधिकरण जोधपुर
--	--	--